



Redistricting 2021/2022 Second Public Hearing

March 28, 2022



www.bbklaw.com
© 2021 BEST & KRIEGER LLP

Fallbrook Public Utilities District

2021/22 Redistricting Process

AGENDA

- 01 Redistricting Process
- 02 Review Draft Maps
- 03 Next steps and hearings

Redistricting Process

STEPS	DESCRIPTION
1. Information Meeting / Community Workshop	Introduce the redistricting topic and solicit community and board input on Communities of Interest
2. Prepare Draft Maps	Consultant will draft proposed maps based on Public Hearing input and staff consultation
3. Public Hearing No. 1	Review Draft Maps; take public input; consider communities of interest
4. Public Hearing No. 2	Review Draft maps May consider adopting Resolution of approval for final map
5. Map adoption	<ul style="list-style-type: none"> • Map adopted via ordinance or resolution • Final map must be posted at least 7 days prior to adoption

Redistricting Rules & Goals

Federal Law

- Equal Population
- Federal Voting Rights Act
- No Racial Gerrymandering



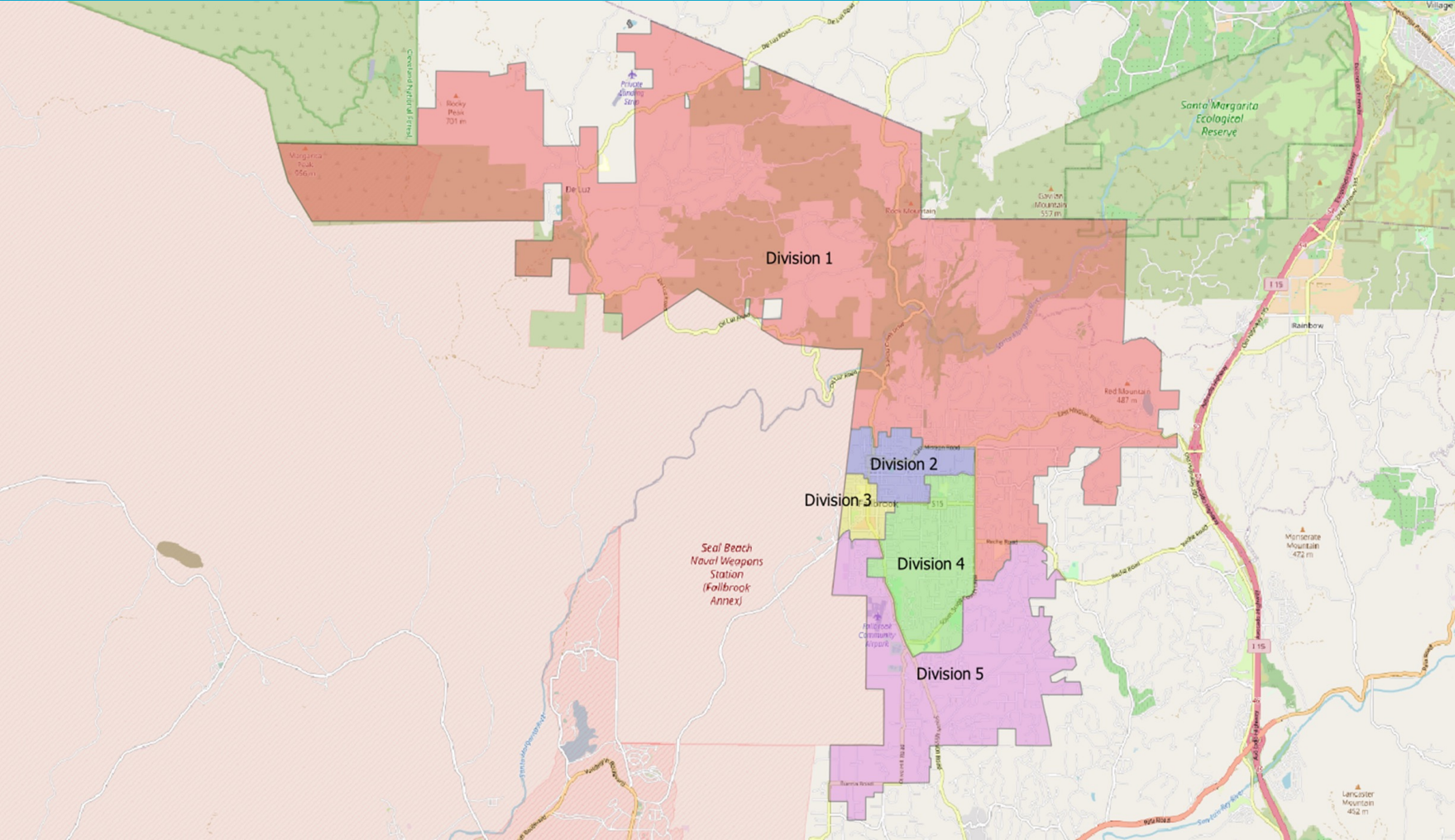
California Criteria for Special Districts

- Topography
- Geography
- Cohesiveness, Contiguity, Integrity of territory
- Communities of Interest

Other traditional principles

- Minimize voters shifted to different election years
- Respect voters' choices / continuity in office
- Future population growth
- Preserving the core of existing divisions

EXISTING DISTRICTS



Existing Divisions with 2020 Census Data

Division	Total Pop	% Dev.	CVAP19 Total	CVAP19 NL White	CVAP19 NL Black	CVAP Hispanic	CVAP19 Not Hispanic	CVAP19 NL AIAN*	CVAP19 NL ASIAN	CVAP19 NL Hawaiian	CVAP19 NL Other
1	7,195	3.56%	4,989	3,991	32	759	4,278	8	123	-	56
2	6,946	-0.02%	4,325	2,022	59	1,949	2,343	72	215	6	19
3	6,525	-6.08%	2,695	940	215	1,392	1,293	-	23	22	51
4	7,055	1.55%	5,259	3,296	51	1,700	3,570	9	148	51	2
5	7,017	1.00%	5,063	3,391	157	1,324	3,742	24	75	-	-

Total Population: 34,738 • Ideal Population: 6,948 Total Deviation: 9.64%

*

Findings – Existing Divisions

- Total Deviation is below the acceptable range of 10% at 9.64%
- Division 3 is a true majority/minority voting district with a 50% + 1 concentration Hispanic Citizens of Voting Age Population (CVAP)
- May be able to draw a second majority/minority voting district
- Divisions may be adjusted for population balance

Preeminent Considerations

- Equal population (one person/one vote)
- Geographically contiguous divisions
- Geographically compact
- Measured objectively



Important Considerations

- “Communities of Interest”
 - Physical boundaries
 - Natural or artificial barriers
 - Roadways, rivers, railways
 - Parks, schools, and other landmarks
 - Geographic integrity
 - Minority voice



Important Considerations

- “Communities of Interest”
 - Political boundaries
 - School attendance areas
 - Special district service areas
 - Federal, state, and county divisions



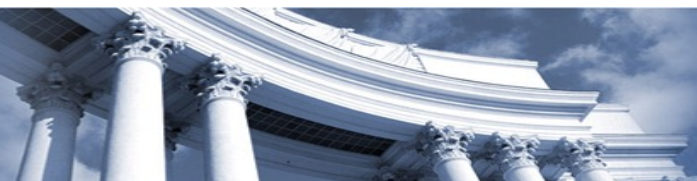
Important Considerations

- “Communities of Interest”
 - NOT:
 - Incumbents’ residences
 - Political affiliations



Review of Draft Map Options

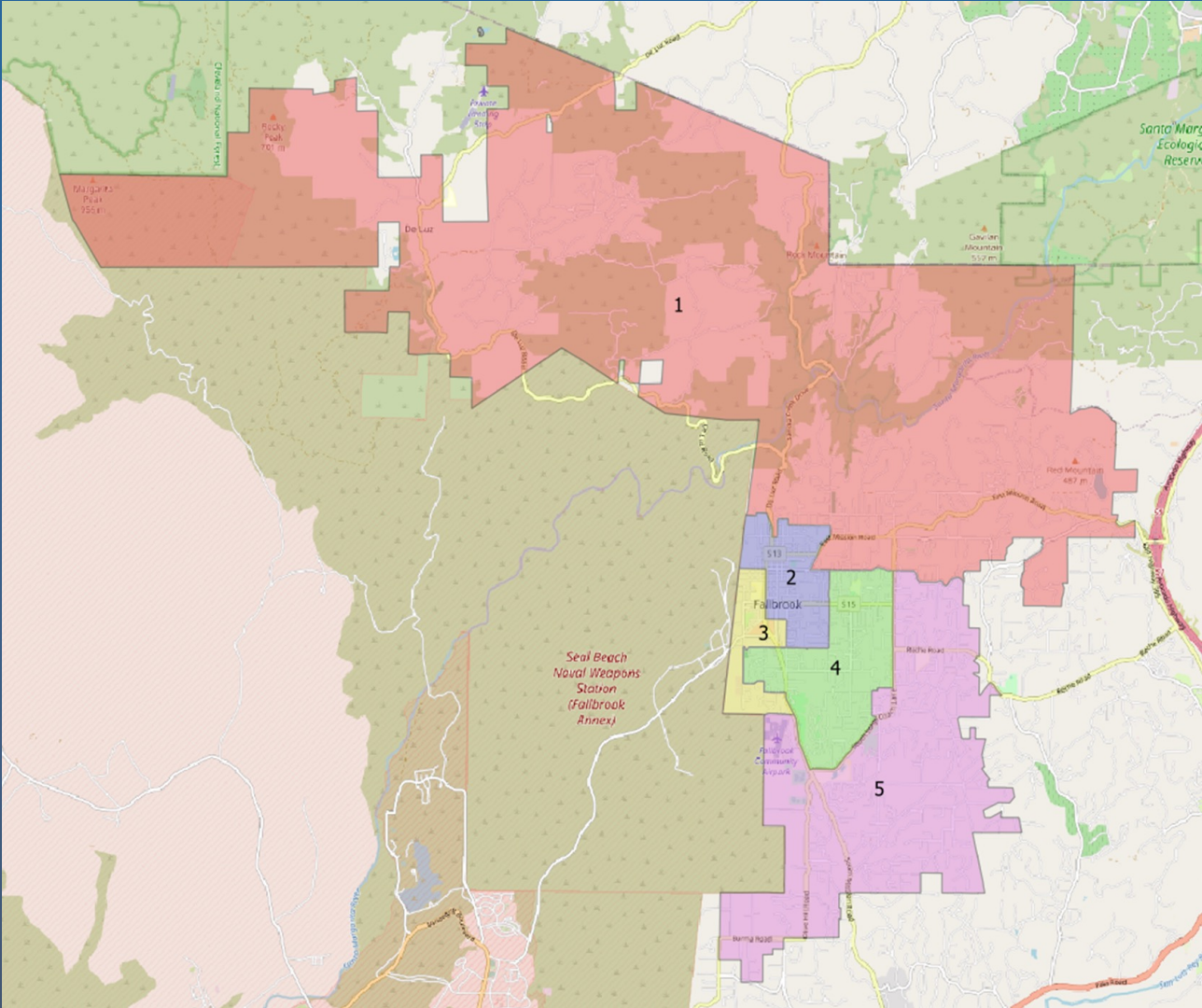
- Consultant has prepared two map options (Option 1 and Option 2)
- The public has submitted three map options (Public Option A, Public Option B, and Public Option C)
 - The author of Option A has requested that Option A be withdrawn



Review of Draft Map Options



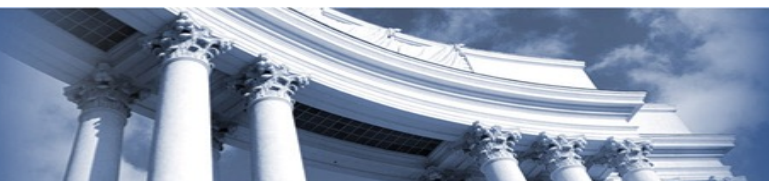
MAP OPTION 1



Map Option 1 with 2020 Census Data

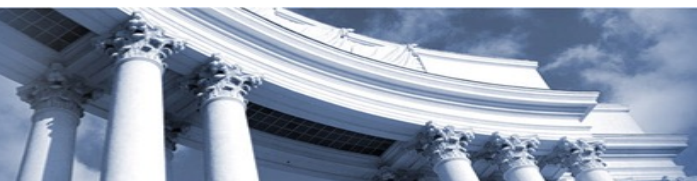
Division	Total Pop	% Dev.	CVAP19 Total	CVAP19 NL White	CVAP19 NL Black	CVAP Hispanic	CVAP19 Not Hispanic	CVAP19 NL AIAN*	CVAP19 NL ASIAN	CVAP19 NL Hawaiian	CVAP19 NL Other
1	7,135	2.70%	4,802	3,606	37	830	3,995	38	213	-	56
2	7,068	1.73%	4,402	1,926	55	2,270	2,132	42	109	-	24
3	6,888	-0.86%	2,804	1,024	218	1,421	1,383	-	24	28	46
4	6,890	-0.83%	5,153	3,193	169	1,621	3,571	7	111	51	2
5	6,757	-2.74%	5,170	3,891	35	982	4,146	26	128	-	-

Total Population: 34,738 • Ideal Population: 6,948 Total Deviation: 5.44%

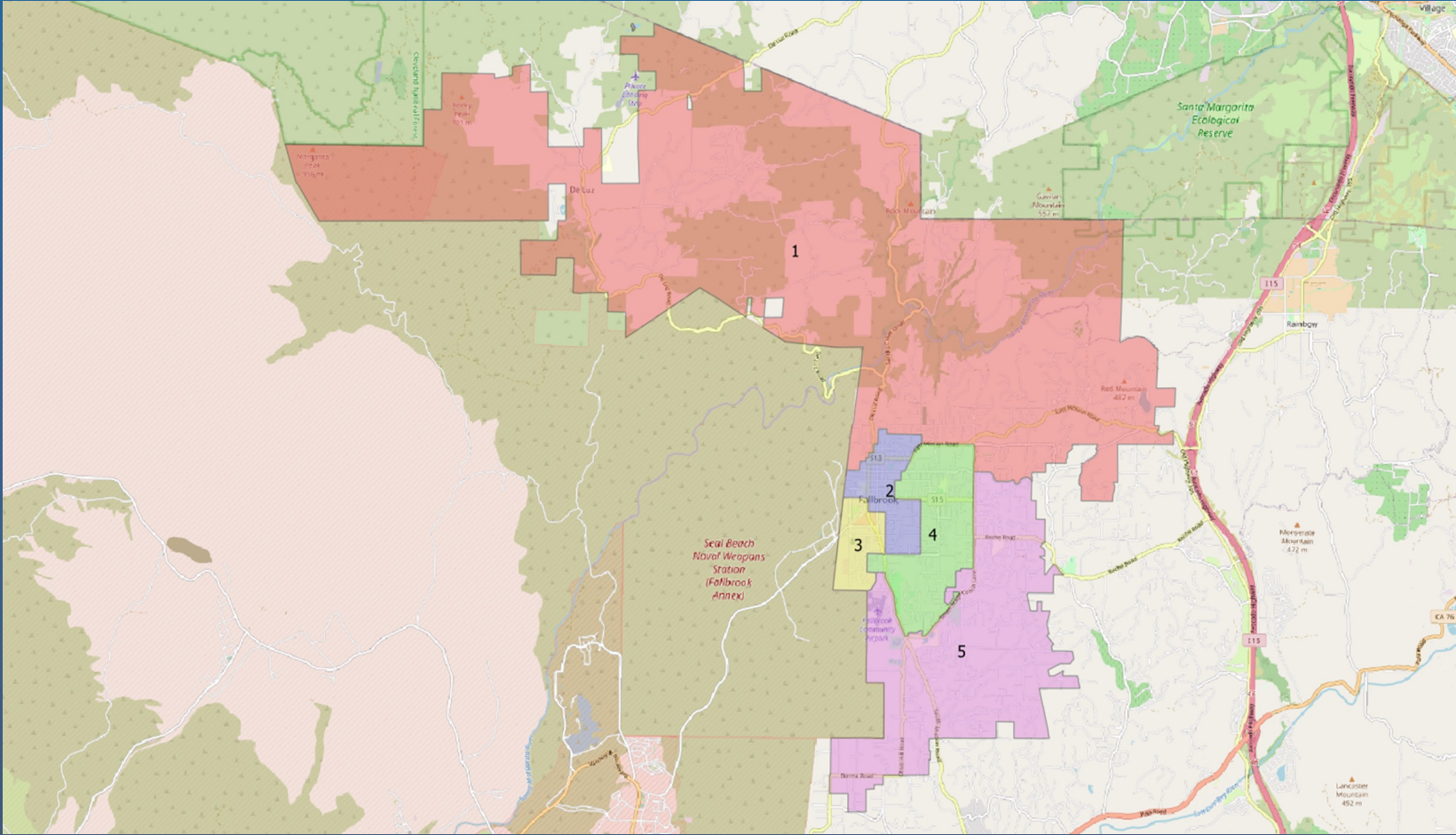


Findings – Map Option 1

- Total Deviation is below the acceptable range of 10% at 5.44%
- Retain the core of existing divisions, with shifts fairly minimal along the borders.
- Draws Divisions 2 and 3 as majority/minority Hispanic voting divisions
- Defers a population of 3,863 from a 2022 voting cycle to a 2024 voting cycle
- Accelerates a population of 3,724 from a 2024 voting cycle to a 2022 voting cycle
- Creates compact, contiguous voting divisions



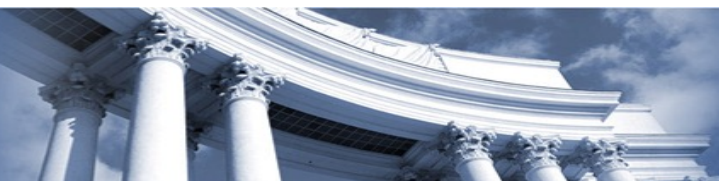
MAP OPTION 2



Map Option 2 with 2020 Census Data

Division	Total Pop	% Dev.	CVAP19 Total	CVAP19 NL White	CVAP19 NL Black	CVAP Hispanic	CVAP19 Not Hispanic	CVAP19 NL AIAN*	CVAP19 NL ASIAN	CVAP19 NL Hawaiian	CVAP19 NL Other
1	6,695	-3.64%	4,473	3,437	82	776	3,718	22	78	-	56
2	6,909	-0.56%	4,095	1,768	95	2,059	2,046	21	125	12	24
3	6,821	-1.82%	3,240	1,018	246	1,765	1,461	-	33	16	47
4	7,341	5.66%	5,228	3,425	45	1,519	3,742	44	217	51	1
5	6,972	0.35%	5,295	3,992	46	1,005	4,260	26	132	-	-

Total Population: 34,738 • Ideal Population: 6,948 Total Deviation: 9.30%

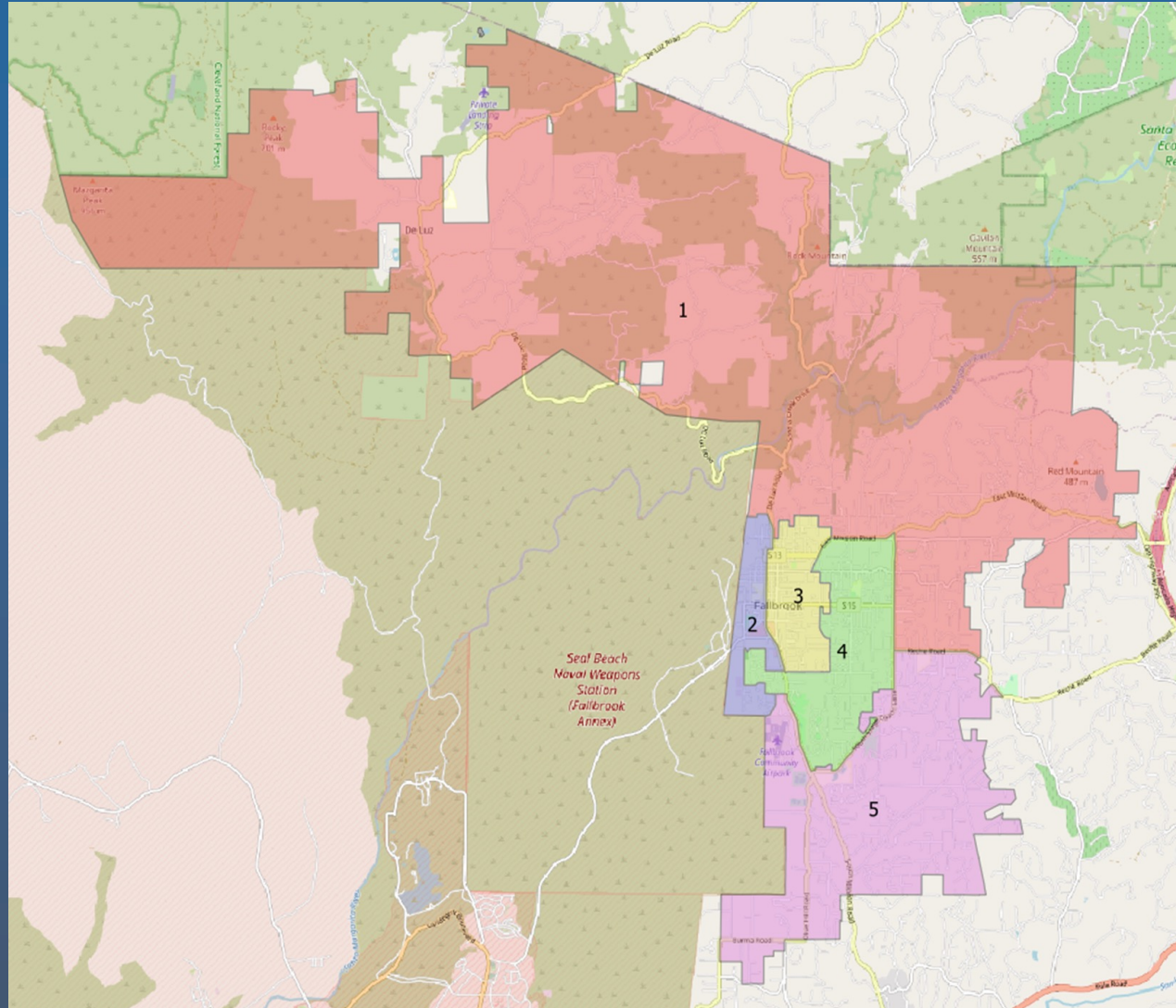


Findings – Map Option 2

- Total Deviation is below the acceptable range of 10% at 9.30%
- Revision to Public Map Option A in order to reduce deviation
- Retains portions of existing divisions, although changes configuration from existing boundaries significantly
- Draws Divisions 2 and 3 as majority/minority Hispanic voting divisions
- Defers a population of 5,651 from a 2022 voting cycle to a 2024 voting cycle
- Accelerates a population of 5,568 from a 2024 voting cycle to a 2022 voting cycle
- Creates compact, contiguous voting divisions



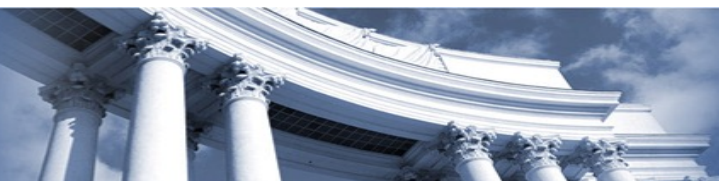
PUBLIC MAP OPTION A



Public Map Option A with 2020 Census Data

Division	Total Pop	% Dev.	CVAP19 Total	CVAP19 NL White	CVAP19 NL Black	CVAP Hispanic	CVAP19 Not Hispanic	CVAP19 NL AIAN*	CVAP19 NL ASIAN	CVAP19 NL Hawaiian	CVAP19 NL Other
1	6,791	-2.25%	4,644	3,745	32	669	4,020	8	123	-	56
2	7,527	8.34%	3,469	1,323	322	1,638	1,813	-	30	28	41
3	7,397	6.47%	4,478	1,868	7	2,425	2,034	45	120	-	30
4	7,059	1.60%	5,208	3,306	107	1,506	3,738	34	227	51	1
5	5,964	-14.16%	4,532	3,398	46	886	3,621	26	84	-	-

Total Population: 34,738 • Ideal Population: 6,948 Total Deviation: 22.5%

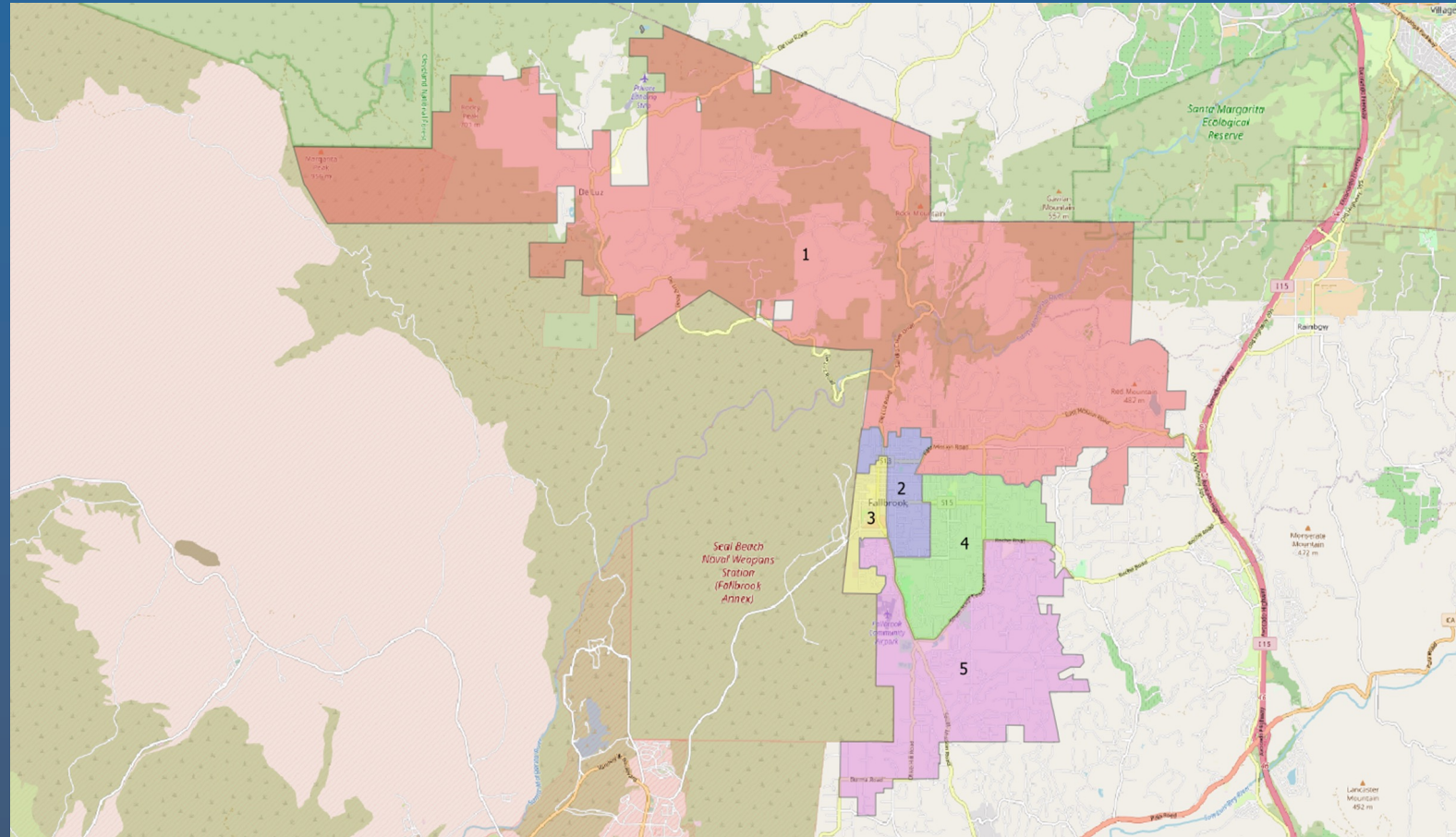


Findings – Public Map Option A

- Total Deviation is above the acceptable range of 10% at 22.50%
- Retains portions of existing divisions/dramatic shift in existing configuration
- Renumbers Divisions 2 and 3
- Draws Division 2 as a majority/minority Hispanic voting division
- Defers a population of 6,946 from a 2022 voting cycle to a 2024 voting cycle
- Accelerates a population of 6,557 from a 2024 voting cycle to a 2022 voting cycle
- Creates somewhat compact, contiguous voting divisions
- Author requested the option be withdrawn



PUBLIC MAP OPTION B



Public Map Option B with 2020 Census Data

Division	Total Pop	% Dev.	CVAP19 Total	CVAP19 NL White	CVAP19 NL Black	CVAP Hispanic	CVAP19 Not Hispanic	CVAP19 NL AIAN*	CVAP19 NL ASIAN	CVAP19 NL Hawaiian	CVAP19 NL Other
1	6,888	-0.86%	4,669	3,551	37	786	3,933	24	211	-	56
2	7,128	2.60%	4,494	1,998	57	2,310	2,170	24	127	-	22
3	7,133	2.67%	2,975	1,061	217	1,490	1,473	21	24	28	49
4	6,781	-2.40%	4,922	3,358	42	1,320	3,587	18	142	-	1
5	6,808	-2.01%	5,271	3,673	161	1,218	4,063	26	80	51	-

Total Population: 34,738 • Ideal Population: 6,948 Total Deviation: 5.07%

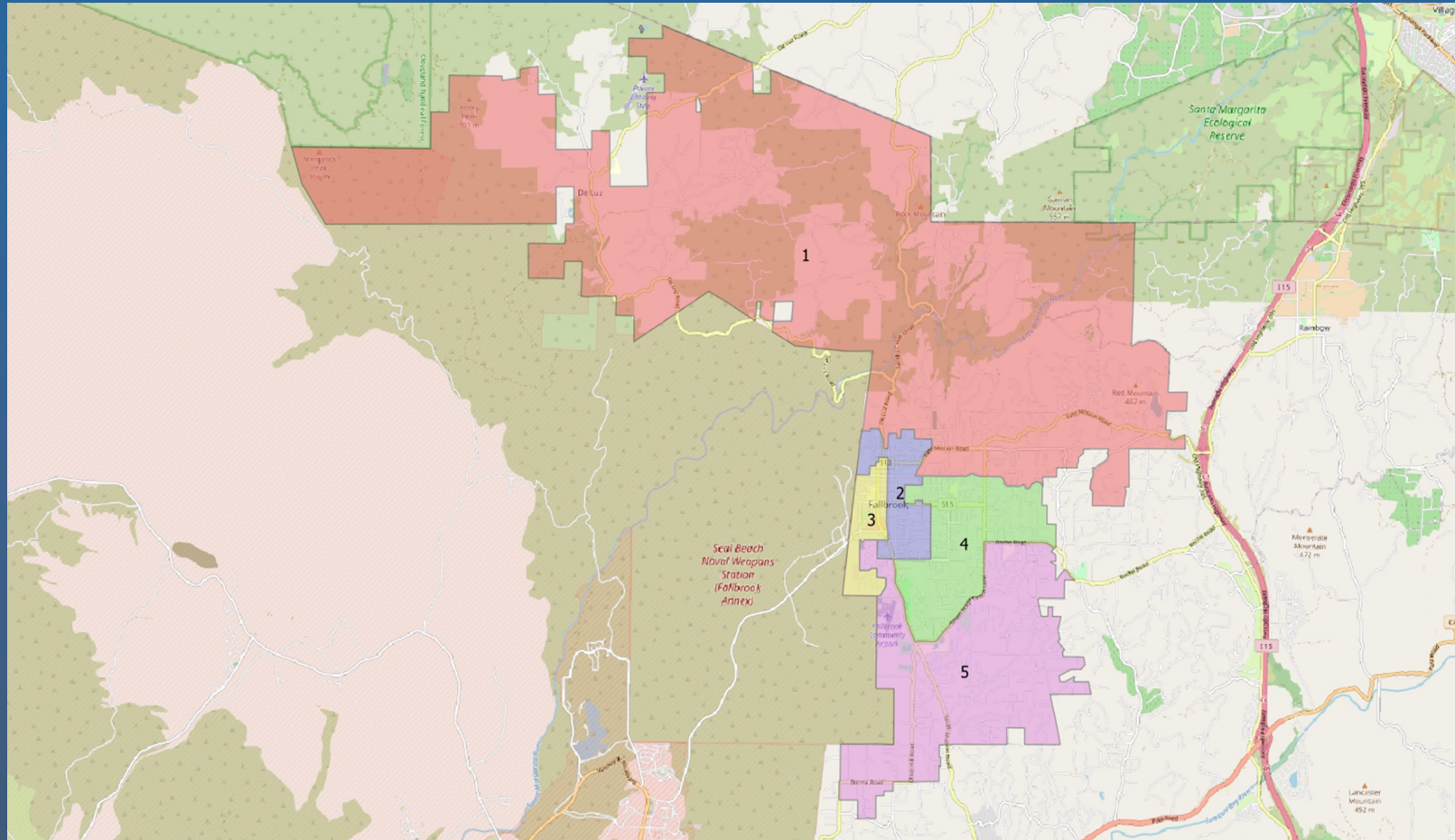


Findings – Public Map Option B

- Total Deviation is below the acceptable range of 10% at 5.07%
- Retains core of portions of existing divisions
- Draws Divisions 2 and 3 as majority/minority Hispanic voting divisions
- Defers a population of 4,109 from a 2022 voting cycle to a 2024 voting cycle
- Accelerates a population of 2,618 from a 2024 voting cycle to a 2022 voting cycle
- Creates compact, contiguous voting divisions



PUBLIC MAP OPTION C



Public Map Option C with 2020 Census Data

Division	Total Pop	% Dev.	CVAP19 Total	CVAP19 NL White	CVAP19 NL Black	CVAP Hispanic	CVAP19 Not Hispanic	CVAP19 NL AIAN*	CVAP19 NL ASIAN	CVAP19 NL Hawaiian	CVAP19 NL Other
1	6,977	0.43%	4,714	3,578	37	797	3,963	24	213	-	56
2	6,799	-2.14%	4,367	1,742	110	2,349	2,000	14	131	-	22
3	7,133	2.67%	2,975	1,061	217	1,490	1,473	21	24	28	49
4	7,562	8.85%	5,421	3,704	44	1,483	3,925	28	142	-	1
5	6,266	-9.81%	4,854	3,555	106	1,005	3,865	26	74	51	-

Total Population: 34,738 • Ideal Population: 6,948 Total Deviation: 18.65%



Findings – Public Map Option C

- Total Deviation is above the acceptable range of 10% at 18.65%
- An online mapping tool display anomaly led us to believe it was below 10%
- Collaboratively drawn with the community at the workshop
- Draws Divisions 2 and 3 as majority/minority Hispanic voting divisions
- Defers a population of 4,248 from a 2022 voting cycle to a 2024 voting cycle
- Accelerates a population of 3,350 from a 2024 voting cycle to a 2022 voting cycle
- Creates somewhat compact, contiguous voting divisions



Discussion

1. What is your neighborhood and what are its boundaries?
2. What other notable areas are in the jurisdiction, and what are their boundaries?
3. Offer comments on proposed maps
4. The public may continue to submit maps until April 4, 2022



Sources of Information



Demographic Data



Public Input



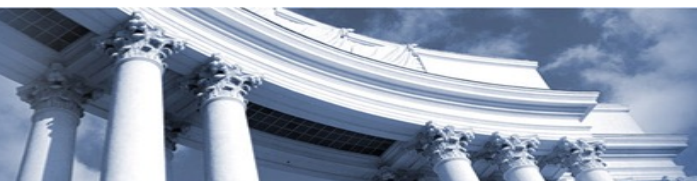
Staff Expertise



Council Input

Timeline & Next Steps

- BB&K will revise map(s) based on Board and community input, if requested
- BB&K will evaluate any publicly submitted maps
- Return at Public Hearing #3 with revised maps for Board consideration



Timeline & Next Steps

February 28, 2022	Public Hearing No. 1
March 17, 2022	Community Workshop
March 28, 2022	Public Hearing No. 2, Review Draft Maps
April 4, 2022	Deadline for publicly submitted maps
April 11, 2022	Public Hearing No. 3, Consideration of Maps for approval
April 17, 2022	Deadline to adopt and submit map to Registrar of Voters
November 8, 2022	General Election