

**Pipeline Replacement FY23  
FPUD Job 3186**

**ADDENDUM B**

*August 10, 2022*

Attention All Bidders:

The following clarifications, changes, and/or deletions to the Contract Documents are hereby made as part of the Contract Documents for the above referenced project as fully and as completely as though the same was included therein. This addendum shall be acknowledged on the face of the envelope submitted with the Bid Proposal.

This Addendum "B" includes clarifications and/or changes to the Contract Documents for the Fallbrook Public Utility District, **Job 3186, Pipeline Replacement FY23.**

Drawing revisions included in this addendum include (revised drawing attached):

- FPUD Standard Drawing W-5

Questions:

- All services are to have Service outlet per W-5. Per the saddle dimension drawing it has D-1 has the outlet size larger then the service. Do you require a nylon bushing but note 6 says no bushings allowed?

Response: See Revised W-5. Coupling to be same size as service line, 1" minimum.

- Notes say on the services will be reconnecting meters. Will the services be requiring new meter boxes or will the contractors be using the existing boxes?

Response: Contractor to use existing meter boxes.

- Regarding the Mobilization payment acceptance as noted: The Special Provisions for this project, under the Mobilization Payment for Initial Mobilization, Article 44, Section b of Spec Section 00100 General Conditions, notes temporary utilities, fire protection systems and field office trailers for the Contractor and Engineer, complete with onsite communication facilities, phones, radios and fax machines as part of the initial Mobilization costs. If these items are truly a requirement for the project, please provide the details and expectations for this work.

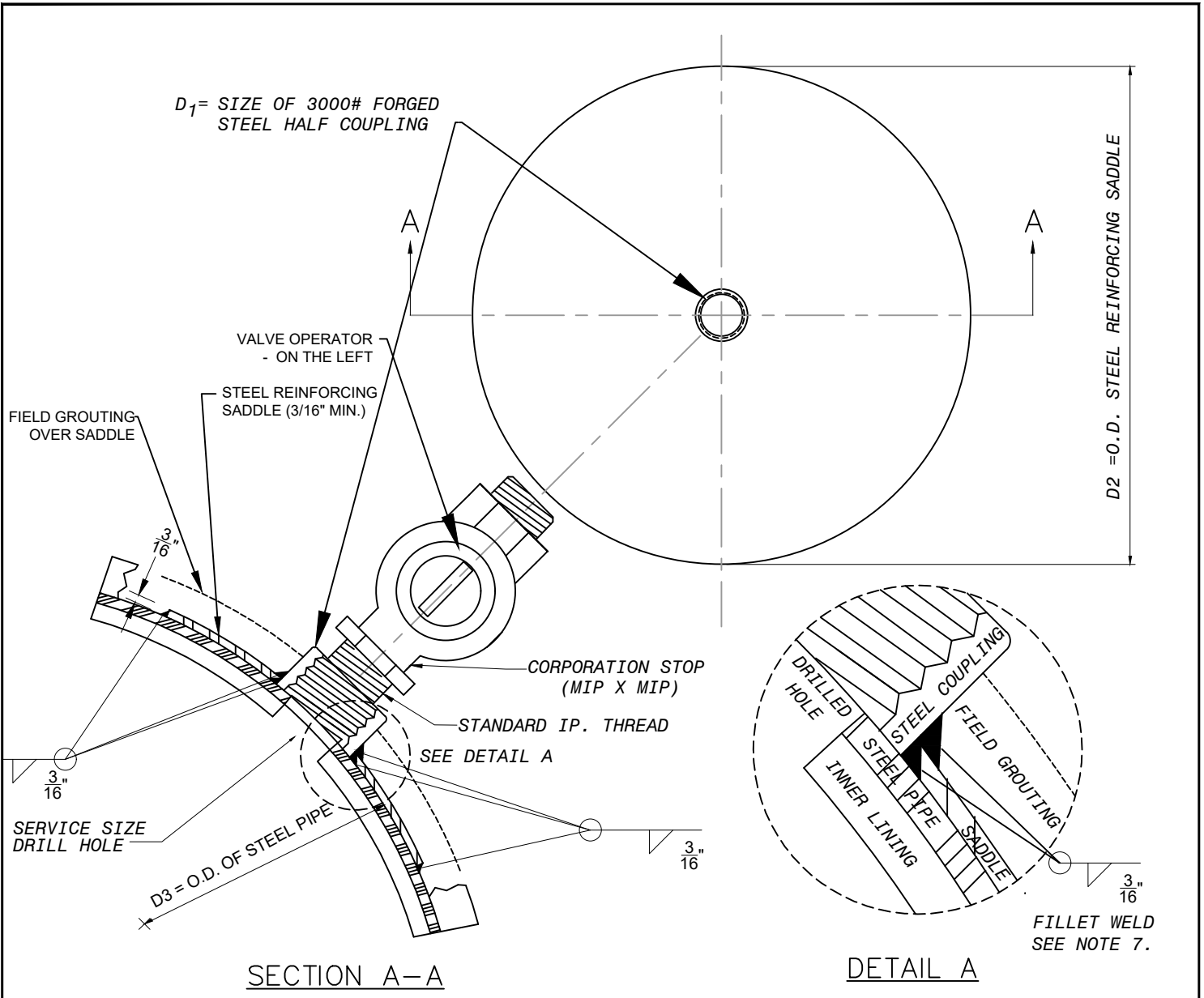
Response: Contractor field office is not required. All contractor facilities deemed necessary by the contractor to complete the work are to be included in mobilization costs.

- As Contractors, we have no control over our suppliers, nor their manufacturers, nor are the industries' volatility and we ask for consideration of this fact if a time extension is requested, identifying the material procurement and delivery as the cause of the delay.

Response: Time extensions due to procurement times will be considered on a case-by-case basis.

- Per Addendum A, there is a few different trench patch back requirements depending on the location of the pipe. For bidding purposes and to insure Fallbrook Utilities captures the required scope, is Fallbrook Utilities going to add the Scopes and Quantities to the Bid Form? or are the bidders to determine what is Private, or Public and the Limits of the Full Width Grind and Overlay?

Response: Per Addendum A, extent of area requiring full width overlay is defined. All other areas, private or County maintained, to follow trench patch standard detail FPUD W-21 and San Diego Regional Standard Drawing G-24A/B.



SECTION A-A

DETAIL A

**NOTES:**

1. USE DOUBLE-PASS WELDS FOR FABRICATION & FIELD WELDS.
2. SADDLE CURVATURE TO BE FORMED TO MEET PIPE DIAMETER D3, AS INDICATED.
3. WHEN INSTALLED. OUTLET TO BE COATED WITH SAME COATING AS PIPE.
4. SERVICE LATERALS TO BE INSTALLED AT 45° ANGLE ABOVE SPRINGLINE OF PIPE.
5. SERVICE CONNECTION CAN BE MADE WITH LINE IN SERVICE (HOT-TAPPED).
6. BUSHINGS ARE NOT ALLOWED.
7. HALF COUPLING IS PLACED ON PIPE AND FILLET WELDED PRIOR TO WELDING SADDLE AROUND COUPLING.
8. IF PIPING IS NOT HOT-TAPPED, GROUT INSIDE OF FITTING. REINFORCING SADDLE IS NOT REQUIRED.
9. IF PIPE HAS MFR WELDED COUPLINGS, SADDLES ARE NOT REQUIRED.

SADDLE DIMENSIONS		
SERVICE SIZE	D <sub>1</sub>	D <sub>2</sub>
3/4" / 1"	1"	5"
1-1/2" / 2"	1-1/2" / 2"	7"

	REV. DATE	BY	APPROVED
	2/23/17	SMD	JB
	8/28/19	SMD	AWC
	8/10/22	SMD	AWC



**SERVICE OUTLET SADDLE**

DRAWING NO.  
**W-5**